

Moggerhanger

Primary School & Pre-School



A little school...



...with big ideas!

Executive Principal's Welcome

I look forward to welcoming you and your son/daughter to Moggerhanger Primary School. The school was graded as "Good" in our most recent OFSTED inspection.

We are '*a little school with big ideas*' located in a beautiful rural village near Sandy. We provide children with a rich and exciting education which is relevant to them and develops their skills and abilities. Our smaller than average class sizes mean that all children are treated as individuals. We put the children at the heart of everything we do, and this approach helps us to ensure there are no barriers to a child's learning.

The environment we provide is a nurturing and caring one. Together with our personalised approach to children's learning, we believe this allows children to develop as individuals and enables them to become lifelong learners and good citizens.

We are a highly successful school built on the partnership between pupils, parents/guardians, staff and the local community. As a school, we pride ourselves on ensuring that we achieve quality in all that we do. Our purpose is to work together to create a positive learning environment in which all pupils can realise their full potential.

We are proud of all our pupils' achievements as they progress through the years. We provide:

- A curriculum which promotes engagement and challenge, as well as providing breadth, balance and personalisation
- Strong attainment at every milestone and key stage
- Consistently good and outstanding teaching from qualified teachers
- A calm and safe learning environment with very well behaved pupils
- An ethos based on positive relationships: pupils who enjoy their learning, with teachers who love teaching
- A commitment to ensuring everyone achieves their full potential.



Executive Principal's Welcome

Moggerhanger Primary School is a Values school and we believe this moral education underpins good behaviour and is a foundation stone of our school.

We pride ourselves on our fantastic learning environment, both indoors and outdoors. The staff, governors and children work together to continually enhance and improve our school. We realise how fortunate we are that Moggerhanger Primary School is situated in a particularly beautiful, rural environment. Children have dedicated Forest School lessons where they make the most of our outside environment, which enhances the children's understanding of nature and the environment, while providing fantastic opportunities to develop their well-being.

Moggerhanger Primary School is committed to safeguarding and promoting the welfare of children and young people and expects all staff and volunteers to share this commitment.

I look forward to meeting you and working in partnership with you, to ensure your child achieves their full potential and achieves their dreams, through positive, enjoyable learning and being part of the Moggerhanger Primary School community.



Kind regards

Miss K Hayward
Executive Principal

'Pupils' well-being is paramount and the staff in the school have undergone thorough training to ensure that pupils are kept safe and secure.'

Ofsted, 2018

Our Aims and Objectives

We believe that all children are individuals and we pride ourselves on providing a stimulating and exciting learning environment in which everyone feels safe and secure. We are committed to the safeguarding of our children and ensure that arrangements are in place for safeguarding and promoting the welfare of children.

Our curriculum provides the children with rich, diverse, first-hand experiences which are based around stimulating, challenging, practical and enjoyable activities. We work closely with parents/guardians and the community to help our children get the best from their learning. English and Mathematics are taught daily as discreet lessons, as well as through subject areas such as Geography, History, Science and Computing, in accordance with the National Curriculum. Children also have weekly sessions dedicated to Art, Design and Technology. We teach French in Key Stage 2.

You will find our full 'Aims and Objectives' on our website.

'I observed pupils enjoying their morning breaktime, playing games and interacting well with members of staff in a safe and secure environment.'

Ofsted, 2018



Our Vision

At Moggerhanger Primary School, we are passionate about the education, wellbeing and safety of our children. This coming year, as in all the years before it, we will strive for constant growth and improvement with the intention of making the children's time in school inspiring, exciting and purposeful. The children will continue to be placed at the heart of all the decisions that we make and the actions we take. We believe that this approach will enable every child to understand the importance of learning and instil in them a love for learning that is life-long.

We wish to offer an outstanding and innovative primary school provision that positively challenges and supports all children to the end of Year 6, instilling the skills and enthusiasm needed for further success in their secondary education and future lives. We will achieve this through a fully inclusive creative curriculum which will present the children with learning experiences that will meet their individual needs, whilst motivating them, promoting independence, filling them with confidence and enabling them to flourish; they will also be able to approach new problems and challenges with positivity, resilience and self-belief.

You will find our full 'Vision Statement' on our website.

'The school provides a happy and vibrant learning environment for its pupils.'

Ofsted, 2018



A Values School



Values are universally accepted principles that guide our behaviour and promote good citizenship. We believe they are embraced by people of all faiths and are an integral element of society. We also believe that learning about values helps our pupils develop into successful learners and successful adults.

Values are introduced through assemblies and classroom-based activities. They are for everyone in our school, adults and children alike; and adults play a vital role in demonstrating the values we are teaching our children. We ask that, whilst in our school, visitors reflect our values. We work hard to live our Values every day.

Through assemblies and classroom teaching, children learn to understand each value, and have the opportunity to discuss the meaning and relevance of values in our lives. We also award special Values certificates for children who are displaying our Values during the school day.

We have Four Core Values which are in line with those of our federation sister school, Sandy Secondary School, where they are also the names of their four houses. Our Four Core Values are: **Courage**, **Excellence**, **Determination** and **Inspiration**. Each Value is accompanied by a child-friendly statement and symbol to help the children understand them in context.

Our Four Core Values

COURAGE

Be brave



EXCELLENCE

Do your best



DETERMINATION

Never give up



INSPIRATION

Reach for the stars!



Forest School



Our Forest School ethos is for our children to instigate, test and maintain a curiosity in the world around them. It allows them to explore, be creative, learn about and preserve the natural world in a safe environment.

Forest School is an all-season activity. Sessions can range from exploring and identifying trees, plants, flowers, bugs and animals, to learning fire safety and constructing camp fires, to survival skills such as den building. Each session will allow the children to explore at their own pace and progress, and to explore their own child-led learning.



Forest School

Pre-School and Reception have a dedicated Forest School session once a week.

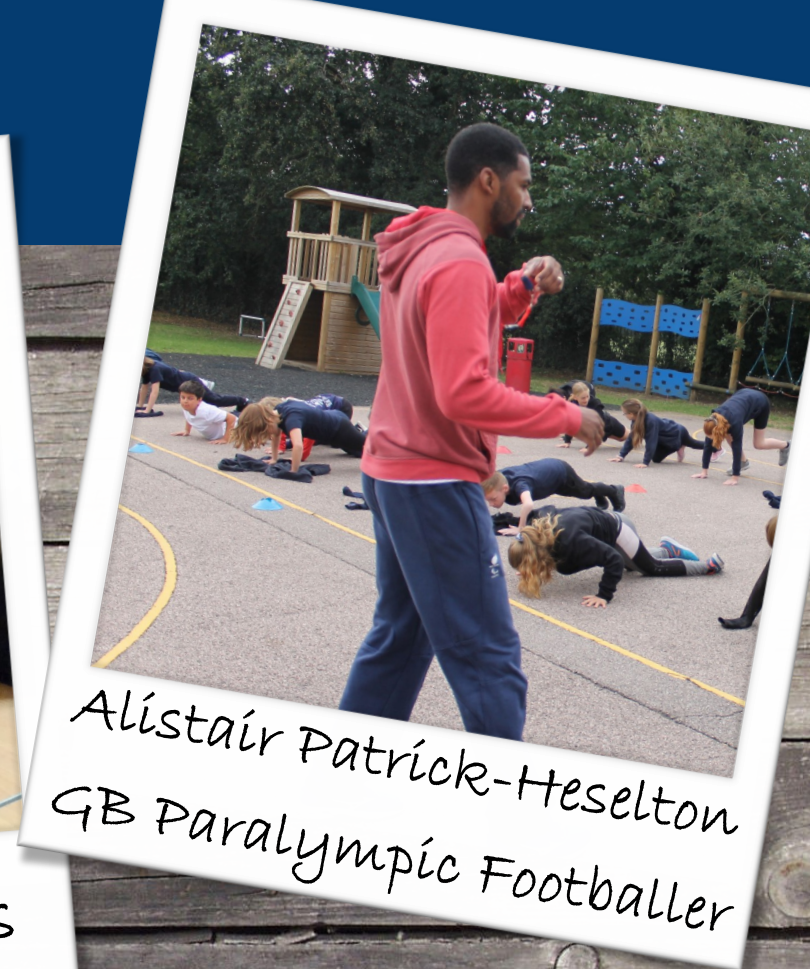
Key Stages 1 and 2 have a dedicated Forest School day once a half-term, to allow them extended, sustained time for their activities.

For these sessions the children wear weather-proof clothing and wellies—and they're not afraid to get dirty!

“
‘Nature is
one of our
greatest
teachers’
”



Enrichment



We organise exciting and inspiring opportunities throughout the year, and welcome a wide range of visitors to provide depth and breadth of experiences for our children.

Early Years

At Moggerhanger Primary School we are extremely proud of our Early Years setting, which comprises of Reception and Pre-School, both of which have exceptionally small class sizes. The kind and dedicated teaching staff work hard to create a warm and stimulating environment where learning is fun, and the children are at the heart of everything we do.

Our Reception and Pre-School are a fully integrated part of the school, giving your child the opportunity to benefit from an extensive range of facilities in our primary school setting, such as a large, well equipped playground, field, Forest School area and traditional school hall. Our Pre-School and Reception each have their own connecting classroom, and are able to free-flow through both rooms and share a designated outdoor area during their child-initiated time.



Pre-School



Chicks Class

At Moggerhanger Pre-School, also known as 'Chicks Class', we provide children with the highest standards of care, development and education in a safe and encouraging environment. We pride ourselves on nurturing children through one of the most exciting periods of their lives, as the time from birth to five years is so important in laying down the foundations for learning in later life. We have a passionate and experienced team, who plan and deliver exciting and interactive sessions to develop the key Early Years areas of learning, as well as encourage the children to be self-sufficient and initiate their own play and investigations.

As your little ones develop from Chicks to Robins, when they enter Reception class in the main school, we are committed to working with parents/guardians, families and the local community to make sure they have the happiest start to their learning journey. We see all our children as individuals and will support and stretch them appropriately, to ensure they progress. They will develop through adult and child initiated play, as well as some learning time focused on phonics and numeracy activities, to help them prepare for Reception.



Pre-School



chicks class

Our Pre-School children usually join us the term after their 3rd birthday. We have three main start dates per academic year: September, after Christmas, and after Easter. Depending on your circumstances we may be able to enroll children before this, or at different points in the year. Please contact us to discuss your individual needs.

Funding

Every child over 3 years old is entitled to at least 15 hours of free childcare and our Pre-School is a great place to spend those hours! Some families are entitled to a full 30 hours (all day Monday to Friday) of funded sessions. If you are only entitled to the 15 hours, you can pay for additional sessions. If your child uses their 15 free hours in another setting, you can pay for additional sessions with us. Please contact our admissions team to discuss funded sessions and fees on:

admissions@moggerhangerprimary.co.uk

Session Times

Children can attend morning, afternoon, or full day sessions. We also offer wrap-around care with our before and after school clubs. The main Pre-School session timings are as follows:

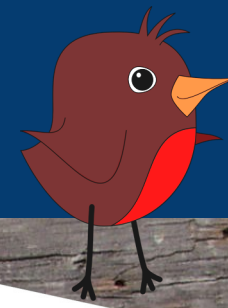


Morning
9am-12pm

Afternoon
12pm-3pm

Full day
9am-3pm

Reception



Robins Class

Our Reception Class, also known as 'Robins Class', continue with their learning through a mixture of child-initiated play and adult-led sessions.

Each morning the children have a focused 'carpet session' for Mathematics and Phonics. In the afternoon the children have another 'carpet session' where they cover a range of areas of learning, including Personal, Social and Emotional Development, Understanding the World, and Expressive Art and Design. Robins Class have a dedicated PE lesson and Forest School session once a week. During their child-initiated time, the children have access to indoor and outdoor areas.



Join us in Early Years

If you are thinking of joining us for Pre-School or Reception, you will find lots more helpful information on our website. You can visit www.moggerhangerprimary.co.uk and click on the tab 'Admissions 2021' for information on admissions, or 'Pre-School' for our dedicated Pre-School prospectus.

You can contact us directly to organise a tour, by phoning or emailing us:
Telephone: 01767 640270
Email: admissions@moggerhangerprimary.co.uk

'The school's small size creates a family atmosphere, and pupils told me that they get on well with their teachers.'

Ofsted, 2018



Year 1 & 2



When our children leave Reception they join our mixed Year 1 and 2 class, where we still have much smaller than average class sizes. Our mixed year groups allow our children to be supported and extended as they continue with their learning. Whilst in Year 1 the children will take their Year 1 Phonics Screening Test, and in 2019 our school achieved higher than local and national averages. In Year 2 the children will take their end of Key Stage 1 assessments. In Woodpeckers class our children continue to demonstrate outstanding behaviour and excitement for learning.



Year 3 & 4



Owls class

As our children enter Key Stage 2, they will join our Year 3 and 4 class. The children in Owls class continue to follow the requirements of the National Curriculum, through exciting and engaged themed learning. They study units such as 'In the Mists of Time—Stone Age to Iron Age' and 'Rainforest Adventure!'.

Owls class also continue to receive specialist P.E. teaching with our qualified P.E. teacher, Miss Corke, twice a week. We continue to place a high emphasis on PSHE (Personal, Social, Health and Economic education) and SMSC (Spiritual, Moral, Social and Cultural development) teaching. The children also begin learning French, and also attend swimming lessons for 6 weeks during the Spring Term.



Year 5 & 6



Kites Class



'The older pupils take pride in wearing their distinctive uniform. They enjoy travelling to the federation's secondary school four times a week for their afternoon lessons. This arrangement clearly develops their confidence and self-esteem.'

Ofsted, 2018

Our Year 5 and 6 children benefit from the family environment of our primary site, as well as the incredible teaching and resources available to them at our secondary school site. Kites travel by minibus for four afternoons per week at Sandy Secondary School, where they receive specialist teaching in P.E., Design and Technology, Music and various other subjects. This is invaluable for not just their learning, but also supports the transition from primary to secondary school.

Kites attend swimming lessons in the Spring Term, and a three-day residential adventure activity camp in the Summer Term.

Wraparound Care

Breakfast Club

Breakfast Club opens at 8:00am every school day, and children can have breakfast and play games with their friends in a warm and safe environment.

Moggies After School Club

After school club stays open until 5:15pm every school day. We organise exciting activities at Moggies throughout the year, such as Bonfire Night, Christmas parties, bingo, cooking and Forest School.

*'Pupils are very well mannered
and courteous towards visitors
and one another.'*

Ofsted, 2018



Contact Us

'The leadership team has maintained the good quality of education in the school since the previous inspection.'

Ofsted, 2018

To discuss admissions and to book a tour of the school, please contact us directly. We look forward to welcoming you to Moggerhanger Primary School!

Telephone: 01767 640270

Email: admissions@moggerhangerprimary.co.uk



MOGGERHANGER PRIMARY SCHOOL

Blunham Road Moggerhanger Bedfordshire MK44 3RD

Tel/Fax: 01767 640270

Email: office@moggerhangerprimary.co.uk

Website: moggerhangerprimary.co.uk

